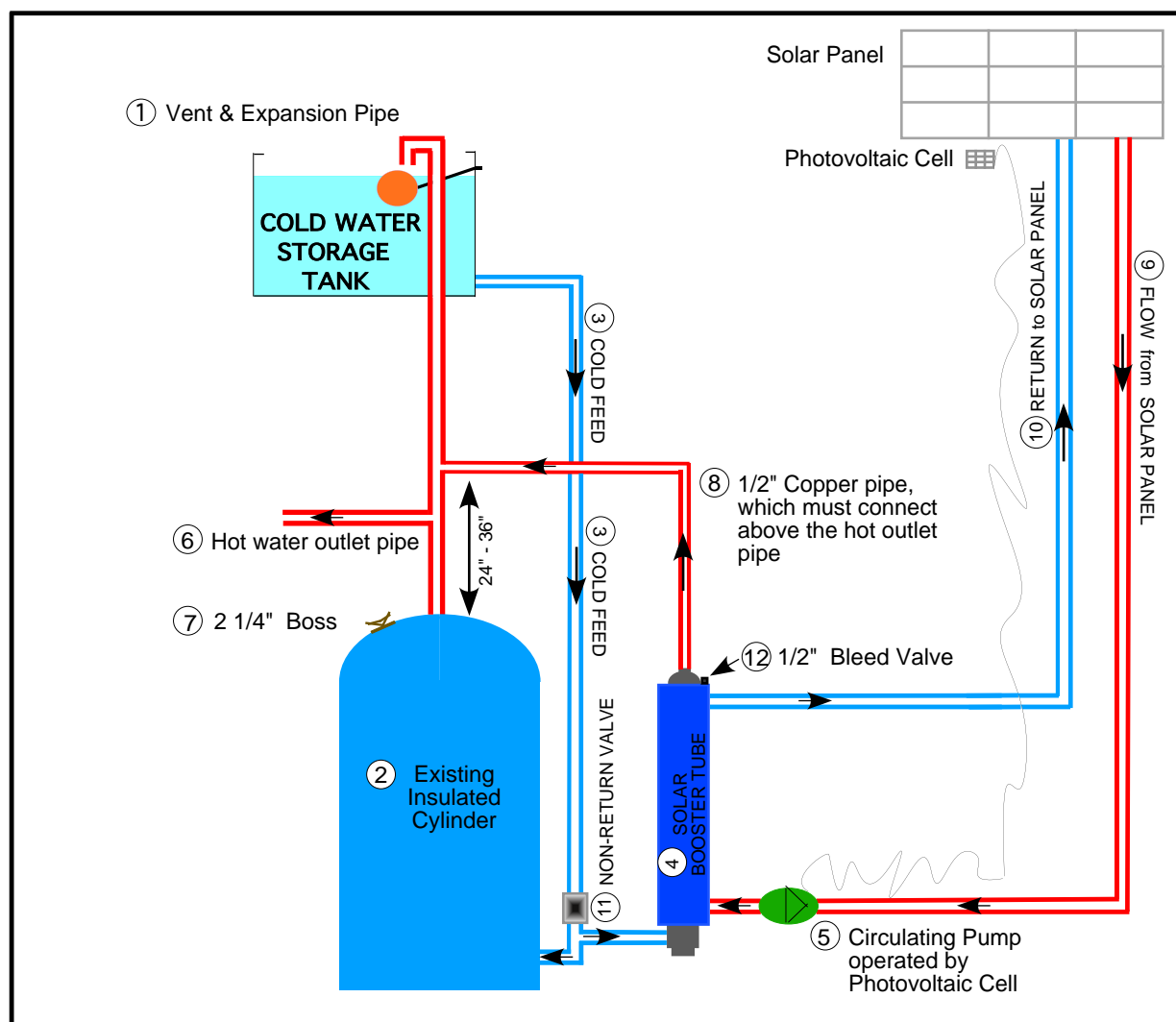


## Solar Booster Tubes

The Lycris Byrne Solar Booster Tube is a bolt on heat exchanger to the existing hot water storage cylinder. It may be used in conjunction with a solar panel and/or with an oil or gas fired boiler. The Booster Tube is designed to work with a solar panel and alleviates the necessity to change the existing cylinder. The unit operates as per drawing below and is sized in accordance with the height of the existing hot water storage cylinder.



- |  |  |
|--|--|
| 1. Vent & Expansion Pipe.  | 7. 2 1/4" Boss.                              |
| 2. Existing Insulated Hot Water Storage Cylinder.                | 8. Hot water outflow from Booster Tube.      |
| 3. Cold Feed.  | 9. Flow from Solar Panel to Booster Tube.    |
| 4. Solar Booster Tube  | 10. Return to Solar Panel from Booster Tube. |
| 5. Circulating Pump operated by Photovoltaic Cell or Thermostat. | 11. Non-Return Valve.                        |
| 6. Hot Water outlet from Cylinder.                               | 12. 1/2" Bleed Valve.                        |